



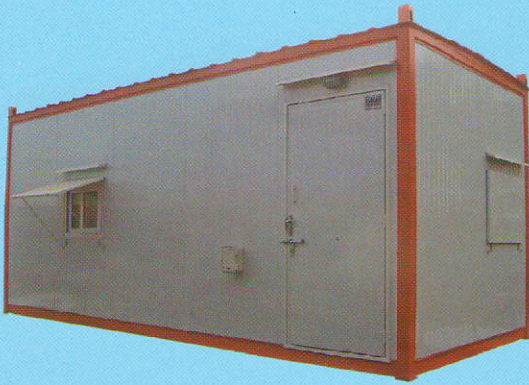
Sintex
PREFABS

**BUNK
HOUSE**

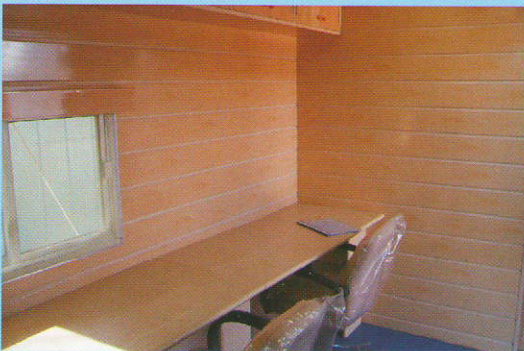
A READY MADE
BUNK HOUSE



IDEAL SOLUTION FOR ALL SITE WORK



Inside view of Bunk House



Sintex PREFABS BUNK HOUSE

In line with our innovative track record we have evolved the largest ever range of Prefabricated Building Structures (called Prefabs) to cater to all end users. While creating these wonderful products, we have taken into consideration structural, climatic, engineering, architectural and similar features so that the end product delivers you value for money in required time frame.

Sintex "Bunk Houses" is yet another innovative product from the House of Sintex. Sintex Bunk Houses are best suited for all types of housing applications at sites. These are ideal for all types of site-work as Project Office, Site Office, and Living Modules etc. Ideal for big organizations like Reliance, ONGC, HPCL, BPCL, GAIL, Hydroelectric projects, Thermal projects, Road Infrastructure projects, large civil projects and Mega Industrial projects

Unique Features

- Containerized office/ Living Modules with built in arrangement for lifting by hooks / by crane
- Complete with electrical wiring and option to be plugged-in to external electrical source
- Sliding windows with necessary weather sheds and with optional mosquito screens
- Self locking doors with locking arrangements closures & steps if kept at an elevated level.
- External bulb and headlights
- Provision for fixing air conditioners, DG sets (optional)
- Internal furnishings from pre-laminated PVC sections
- Can also be provided with following options
 - Modular Work stations
 - Study Tables
 - Storage Racks
 - Built in Refrigerator/ Water Coolers etc

Description:

Sintex Bunk houses are made out of Sandwich panel along with required MS skeleton.

Specifications:

Wall	: Wall shall be made out of EPS/PUF sandwich panel with use of Precoated sheet
Floor	: Floor shall be made out of readymade sandwich floor panel with one side precoated sheet and other side 19mm Plywood with PUF.
Roof	: Roof shall be made out of sandwich panel by using Both side precoated sheet with PUF.
Electrical	: Standard electrical point shall be provided.
Furniture	: Furniture provision will be optional.
Smart Feature (Optional)	: The bunk house can have a added Knock down type feature. In this the bunk house can be dismantled at site for long distance movement. In this feature transportation cost can be reduced heavily.

Size:

Serial No.	Length	Breadth	Height
1	10'	8'	8'
2	20'	8'	8'
3	30'	8'	8'